

MONTICELLO HOMES

THE EMERALD

COMING SOON TO
LOT 323

816-373-5900

WWW.PARKRIDGECOMMUNITIES.COM

AMBER SHAWHAN

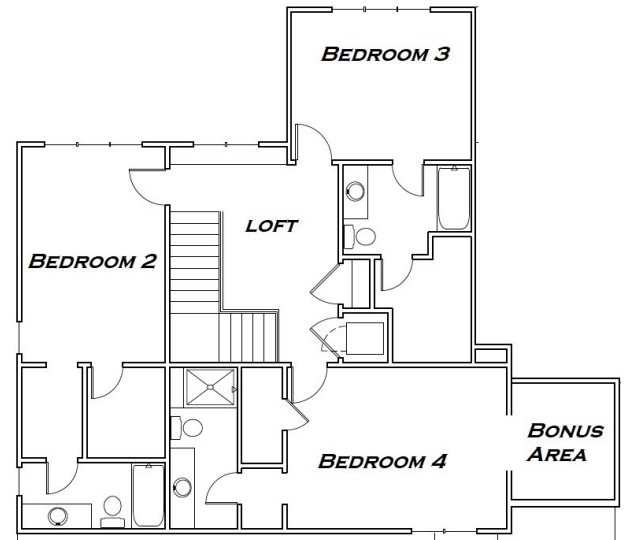
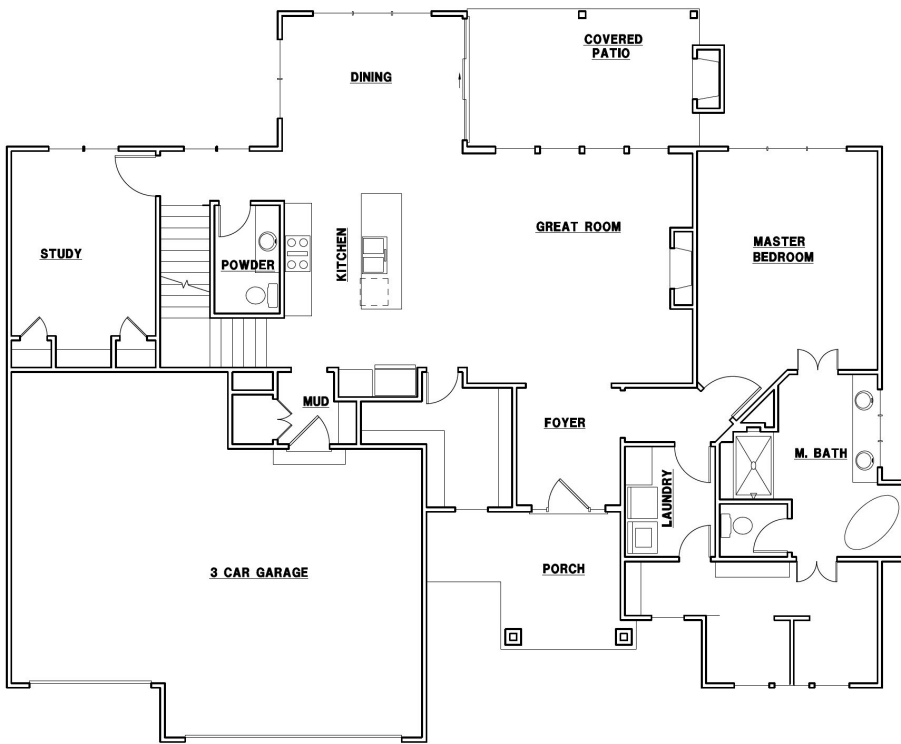
816-522-8127

BRANDON GREGERSEN

816-500-3113



- 4 BED, 4.5 BATH, STORY AND HALF
- STUNNING OUTDOOR LIVING SPACE
- 3006 Sq Ft
- DAYLIGHT BASEMENT
- EVERY ROOM HAS IT'S OWN BATH
- SPACIOUS PANTRY
- STUNNING HOME OFFICE
- HIDDEN STAIRCASE
- HUGE MASTER CLOSET
- COMPLETE HOME WARRANTY
- HOME BUILDERS ASSOCIATION MEMBER



Take A Stroll in the Park

Amber Shawhan
816-522-8127
amber@shawhan.net



Chartwell
KANSAS CITY REALTY
816-877-8700



Brandon Gregersen
816-500-3113
bgregersen@outlook.com

AWARD WINNING SCHOOL DISTRICT
SURROUNDED BY LAKES AND PARKS
CLUBHOUSE WALKING TRAILS
SWIMMING POOLS FITNESS CENTER